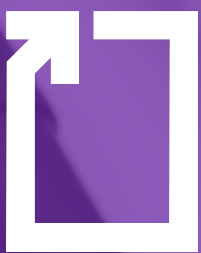


VOLUME 8



WRITING
guide



GOOD TO KNOW

Find the Goldilocks of pens: not too big, not too small, not too fat, not too thin.

The pen that's right for you should be adapted to the shape of your hands. It's a good idea to try out several models, as there are different sizes and types of grips. A rubberized grip or one with small ridges will prevent the index finger from slipping, helping to prevent muscular tension. Something to consider for those with weaker hands.

For left-handed users

The best choices are ballpoint and rollerball pens because they dry faster.

Did you know?

Studies have shown that writing by hand improves cognitive function and creativity!

January 23 is World Handwriting Day. The perfect day to try out different types of pens!

DIFFERENT PENS FOR DIFFERENT STROKES

How to pick a pen.

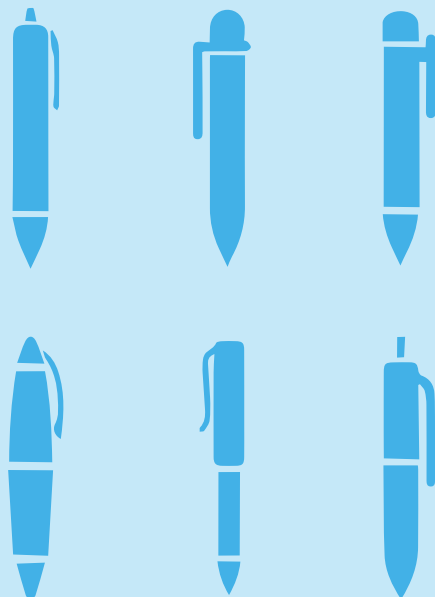
Questions to ask yourself:

- What will you use it for? (daily or occasional use, taking notes or signing documents, etc.)
- How do you want it to feel on the paper? (smooth to very smooth glide)
- What kind of mechanism and tip size do you prefer? (from ultra-micro to large)

Here are the 4 types of pens to choose from:

- Ballpoint
- Gel Pen
- Porous tip
- Rollerball

Tip: Stock up on different types of pens for the office so you have one for every situation!



BALLPOINT - SMOOTH

Ideal for frequent, daily use (taking notes, filling out forms or documents).

Pros

- Constant ink flow via a small rotating ball
- Ink dries quickly so is virtually smudge-free
- Affordable
- Lasts longer than other types of pens

Cons

- Less sophisticated handwriting
- Risks drying out if left uncapped too long
- Ink tends to fade over time, so not recommended for contracts

Tips: fine, medium, broad.

GEL INK - SMOOTHER

The reliable performance of a ballpoint with a smoother writing flow.

Pros

Ink:

- Vivid, intense colours
- Wide choice of colours
- Acid-free, ideal for archiving
- Dries quickly (less risk of smudging)
- Penetrates paper fibers better than a ballpoint pen, ideal for signing checks and contracts

Cons

Runs out faster than a ballpoint pen.

Tips: ultra-micro, micro, needle, medium, broad.

POROUS TIP - SMOOTHER

Great choice for different writing styles and sketching.
The favourite pen of architects!

Pros

- Quick-drying ink
- Wide range of bright, uniform colours
- Adheres to a variety of surfaces (wood, plastic, textiles, cardboard)
- More precise writing (requiring meticulousness, technical drawing)
- Offers the widest choice of tips

Cons

Can be fragile when used on abrasive surfaces.

Tips: extra fine, ultra-fine, fine, medium, wide, conical, and bevelled.

ROLLER BALL - ULTRA SMOOTH

Thanks to a ball that continuously dispenses fluid, water-based ink, writing is more uniform than with a conventional ballpoint pen.

Pros

- Glides smoothly over paper
- Requires minimal pressure to write
- Can be used comfortably for long periods
- Durable metal tip (more resistant than gel-ink and porous-tip pens)
- Rich, vivid colors

Cons

Ink takes more time to dry than oil-based ballpoint ink so is more prone to smudging or smearing.

Tips: micro, needle, fine, broad.

**TOUT
pour le
travail!**



Mégaburo

En magasin et en ligne

hamster.megaburo.ca